



Iconic Art, Architecture and Design on View in Hong Kong

Coinciding with Art Basel Hong Kong, an exhibition by Art Intelligence Global named "Modern Dreamers: Iconic Art, Architecture and Design" opens.

ELIZA JORDAN

MARCH 28, 2025



This week in Hong Kong, “***Modern Dreamers: Iconic Art, Architecture and Design***” (March 25–April 7) opened at ***Art Intelligence Global***. In collaboration with the organization, ***Galerie Patrick Seguin*** and ***NOTA HOTEL***, the show coincides with the 2025 edition of Art Basel Hong Kong to celebrate the synergies of ***art***, ***architecture***, and ***design***.



Installation view of "Modern Dreamers Iconic Art, Architecture and Design," courtesy of Art Intelligence Global.

"As the Asian art market continues to mature, Art Intelligence Global is delighted to present this unique exhibition integrating fine art, architecture and design as a model for elevated modes of aesthetic living," said **Yuki Terasa**, Founding Partner of Art Intelligence Global. "We are pleased to bring about this collaboration with Patrick Seguin, authoritative advocate of French mid-century design and an art collector himself, and Tokyo-based leading luxury hospitality group NOT A HOTEL, whose radical business concept redefines standards and experiences of living. We look forward to welcoming collectors and art lovers to this exhibition."

Celebrating Art, Architecture, and Design



Installation view of "Modern Dreamers Iconic Art, Architecture and Design," courtesy of Art Intelligence Global.

At the heart of the exhibition is ***Jean Prouvé's 6×6 Demountable House*** from 1944. Originally conceived as temporary housing for displaced populations following World War II, the structure represents a convergence of form and function. Constructed from prefabricated metal and wood components for rapid assembly and disassembly, it has since become an icon of modernist design.

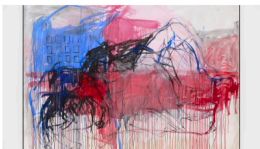
"I am incredibly excited about this presentation of Jean Prouvé's 6×6 *Demountable House* at Art Intelligence Global's exhibition space in Hong Kong," said ***Patrick Seguin***, Founder of Galerie Patrick Seguin. "The exhibition offers a rare opportunity for audiences in Asia to delve into the work of Jean Prouvé, a key figure of the 20th century and globally recognized as one of the most influential designers and architects of his era. It highlights his visionary, modern and pioneering approach to architecture, which continues to fascinate and inspire collectors as well as art and design enthusiasts worldwide."



Jean Prouvé, Panel with porthole windows, 1950, © Galerie Patrick Seguin.

This exhibition marks the first unveiling of the artwork in Asia, following its acquisition by NOT A HOTEL from Galerie Patrick Seguin in a transaction facilitated by Art Intelligence Global. After the exhibition, *Demountable House* will be installed at NOT A HOTEL's headquarters in Tokyo.

MORE ON THIS TOPIC



Tracey Emin Follows Art and Life to the End at White Cube



Evelyn Lin on The Growing Contemporary Asian Art Market in Hong Kong

“NOT A HOTEL seeks to redefine luxury lifestyle by offering unique, immersive experiences blending art, culture and community in highly curated environments. We are extremely pleased to have purchased Jean Prouvé’s 1944 6×6 *Demountable House* from Galerie Patrick Seguin in a transaction facilitated by Art Intelligence Global,” said **Shinji Hamauzu**, Chief Executive Officer and Founder of NOT A HOTEL. “We are thrilled that the *Demountable House* will be unveiled in Hong Kong, and after the

More Rarities on View by Jean Prouvé



Installation view of "Modern Dreamers Iconic Art, Architecture and Design," courtesy of Art Intelligence Global.

"Modern Dreamers: Iconic Art, Architecture and Design" features more rare architectural elements and furniture designed by Jean Prouvé. Among these is a panel with portholes from the Bouqueval demountable school in the Paris region and a selection of furniture pieces, including a few highlights: the aluminum table *no. 804*, a rare prototype being exhibited for the first time; a set of *S.A.M. no. 506* tables and four *Métropole no. 305* chairs—all lacquered in Van Dyck brown and from the same provenance; and the *Cité* armchair from 1930, originally designed for classrooms at Cité Universitaire Monbois in Nancy, France. The latter was Prouvé's first piece of small-series production and remains a testament to his innovative vision.

Integration of Art, Design, History, and Culture



Jean Prouvé, Cité armchair, 1930, © Galerie Patrick Seguin.

In dialogue with these architectural and design masterpieces, Art Intelligence Global has curated an assemblage of fine art that complements the exhibition's themes. Featured works include pieces by modern Japanese master **Morikazu Kumagai**, contemporary artist **Yayoi Kusama**, ceramicist **Rikichi Miyanaga**, and **Kazuo Yagi**—a founding member of the post-war avant-garde movement Sōdeisha.

As one of the first exhibitions of its kind in Asia, “Modern Dreamers: Iconic Art, Architecture, and Design” presents an unparalleled opportunity to engage with the innovations of 20th-century design and modern to post-war artistic expression. This multidisciplinary showcase invites visitors into a seamlessly integrated and interactive exploration of aesthetics, functionality, and historical significance, setting a new standard for exhibitions that merge the worlds of fine art, architecture, and design.



Installation view of "Modern Dreamers Iconic Art, Architecture and Design," courtesy of Art Intelligence Global.

TOPICS

Exhibition

Galerie Patrick Seguin

Hong Kong

Jean Prouvé

Tokyo